

# MATTER OF FACT

a free community newsletter published by  
Venus Bay Community Centre

AUGUST 2021 Vol 14 Issue 8



Providing information for  
Venus Bay, Tarwin Lower  
and Walkerville district

**VENUS BAY**  
COMMUNITY CENTRE

We acknowledge the Traditional Owners of Country throughout Australia and recognise their continuing connection to land, waters and culture.

We pay our respects to their Elders past, present and emerging.



## Common Ground Venus Bay - update from project lead Sarah Gilligan

Head to [Common Ground Venus Bay facebook](#) page to stay in touch and informed/  
Register your interest via [www.commongroundvenusbay.com](http://www.commongroundvenusbay.com)



"It has been a long-held dream of the residents of Venus Bay that one day, 'Evergreen', the farming property on the inlet between the first and second estates, might be enhanced to once again function as an estuarine wetland/floodplain, helping us absorb storm surges, filtering sediments from the Tarwin River and providing habitat for estuarine flora and fauna."

(Submission to Council, Beverley and Ken Walker, 2006).

Due diligence confirmed the asking price of Lot 8 at 2.5-2.7million is very hopeful, several credible estimations put the land value at \$400K, the vendor wants the same and a bit more for Lot 7

There aren't a heap of buyers lining up, so I am no longer focusing on hitting go on the crowdfunding campaign for a snap purchase, none of this will be wasted for when the time comes. I headed off to

find out who owns the remaining 6 x Lots and if they might be interested in selling one or all of them at a more reasonable price for a community purchase.

### WHAT I LEARNED

Well that hopeful bubble burst quickly - What IS likely is all 800acres will be sold like Lot 8 - for private use development potential. The vendors bought off the back of the now defeated Mahers Landing proposal. In their dreams Lot 8 at 2.5 million is the cheap starter, they are looking for at least 20 million for the whole of the Evergreen Estate.

With financial profit as the main goal, a deal anytime soon between the current vendors and community is unlikely. We will stay informed of any serious offers but working out how much we need to raise and what for is still unclear.

..

### LAND USE ..

I'm sure we'd all agree carving up the land into 8 x private residences is not in line with long held planning requirements for open space and a natural buffer between the estates, nor the SGSC Urban Design Strategy for Venus Bay.

..

The development potential of this land should not be measured in "luxury mansions and stables", the development potential is in salt marsh wetland restoration, community strengthening partnerships and projects, cultural and environmental understandings, storm and flood resilience, land management jobs, habitat, birds, the tourism dollar and much more.

..

### STATE OF THE LAND

What a farmer rightly sees for grazing as the "sh#t stuff" is actually a whole lot of healthy salt marsh ground covers marching over the levy bank and up the land.

Fun fact - 80% of the property has serious acid sulfate soil issues and, whilst there are modern building materials that can be used in this environment, the danger is in disturbing the soil. When acid sulfate soil is dug up and air hits it, it turns into bubbling sulphuric acid!! Doesn't that sound like a perfect place to build.

The good news is the Salt marsh restoration process locks the acid sulphate and carbon in!



## THE BIGGER PICTURE

Our story is part of the greater Anderson Inlet story, listed in the National Directory of 160 Important Wetlands. Around 80% of wetlands and mangrove forests have disappeared from our coastlines and we are only just understanding their importance in storm resilience, habitat and ecological stability.

## THE RESTORATION PROCESS

With sea levels rising this land will return to salt marsh whether we like it or not and that's a good thing for our townships, it builds our storm and flood resilience. This restoration is inevitable, now with our help or within a hundred years by itself, nature will win. We have the opportunity to bring that future ecology forward and create an important environmental legacy.

## WHERE THIS LEAVES US

We are at a temporary impasse; I can't ethically lead a campaign for 2.5 (or 20 million!) to buy land worth a fraction of that for its zoned use. My goal is now to ensure the full 800 acres of "Evergreen" is never carved up for private use.

## WHATS THE NEW VISION?

As well as being an extension of our local environmental and economic assets, this project is an extension of our community values. The health of our open spaces, bushland and waterways is of great importance to us, just like the community said it was in 2003... and again in 2006 with the plans for the "Venus Bay Wetlands Restoration Project".

The basis of planning and design for the full 800 acres will come from the experts. Once we know how and where tidal inundation can and should occur we can start designing the full site to suit us: bird hides, board walks and community spaces.

## HOW WILL WE PAY FOR IT?

My priority is to build a simple environmental, cultural and economic case that supports a number of funding scenarios:

- A. A compulsory land acquisition and reclassification for the full 800 acres.
- B. A sustainable development community partnership.
- C. Someone wins lotto and we pay with gambling money, ie. do a David Walsh.
- D. Philanthropic partnership/s.
- E. A mix of A-D (probably minus C)

## NEXT STEPS

1. I have invited a small group of ecologists/professional land and water managers to walk the land and see what we can see both sides of the levy bank.
2. Continue to build the ecological, social and economic case.
3. Keep including key local, state and federal stakeholders.
4. Keep gathering local, state and federal policy objectives that align.
5. Keep chasing environmental, philanthropic and sustainable development funding like a banshee and stay open to all left of field ideas yet unknown.

## COMMUNITY FORUM

A number of you are hanging out for the forum I talked about earlier, we have too many unanswered questions still. As the options evolve we'll schedule an online forum I promise! A professional assessment of the restoration scope will get us started on this dreaming.

The informal and formal professional expertise and advice I've been receiving from community members and local agencies has been exceptional in helping wade through the complexity.

Spread the news, we are going for the full 800 acres. Even if it means a political lobbying campaign.

If you are struggling to imagine this land as anything other than green grass, cows and kangaroos? Take a wander up to the jetty at the second estate and look left, if you are stuck in Melbourne have a look at this explainer.

<https://friendsofvenusbaypeninsula.org.au/wp-content/uploads/2017/03/Projects-Saltmarsh-boardwalk-information-sign.pdf>



I encourage you all to have a look at the video I posted earlier of the work the Glenelg nature trust have done restoring saltmarsh in SA and Victoria, its beyond exciting how the land will heal itself with a little help from us.

<https://www.aabr.org.au/portfolio-items/wetland-restoration-case-studies-from-the-discovery-bay-coast-in-south-australia-and-victoria-mark-bachmann-nature-glenelg-trust-aabr-forum-2016/>





# Gippsland Community Power Hub Summary

**Applicant:** Gippsland Climate Change Network (Lead Agency) in partnership with Energy Innovation Co-operative and Mallacoota Sustainability Energy Group

**Funding Duration:** Until 30 June 2022

**Application Parts:**

**Activity 1:** Establishment and operation of a Community Power Hub (CPH)

**Activity 2:** Delivery of community energy Implementation Ready Projects

**Activity 1:** Establishment and operation of a Community Power Hub (CPH)

Funding for Activity 1 is \$428,500 plus in-kind contributions.

**Collaborative Governance Group** includes:

- Gippsland Climate Change Network – Northern Hublet Latrobe City, Northern Wellington & Baw Baw Shires
- Energy Innovation Co-operative – Southern Hublet South Gippsland & Bass Coast Shires
- Mallacoota Sustainable Energy Group – Eastern Hublet East Gippsland
- 3 others representing geographical areas
- First Nations People
- End of line, isolated communities

**Hub Staff** will be embedded in each Hublet area and include:

- Project Officers (technical, engineering, industry understanding)
- Community Engagement Officers (community development and engagement)
- Administration staff for regional and individual community energy group support

Their role will include:

- Build on community strengths to change thinking & behaviour
- Strengthen links and partnerships within their communities by working towards a shared vision for their areas and build connected communities
- Work with communities to determine their CE needs and capabilities and design solutions
- Coordinate projects and give a sense of local project ownership e.g. energy efficiency information
- Give and receive information about RE, energy efficiency, etc at farm days, markets, agricultural shows and Festivals
- Give communities a platform to feel empowered to act against climate change and lead the transition to RE
- Build on each community's resilience and sense of pride in where they live



There may be additional teams working for specific interest groups across the region eg. Neighbourhood Houses or Traditional Owner and Aboriginal groups.

**Technical Advisory Group** will include:

Hub project and engagement officers

- Administration officers
- Industry professionals
- Technical staff and energy distribution companies (Ausnet).

The group's role will include:

- Advice about proposed and approved community energy projects
- Consider the full range of renewable energy (solar, wind, tidal, bioenergy, hydro, geothermal, microgrids, virtual power plants) when advising on innovative solutions to individual community energy needs
- Make recommendations to the Governance Group to allocate money for feasibility studies or paid experts to support CE groups at vital times.



During the application development stage, a number of potential projects (pipeline) from across Gippsland were submitted for further investigation, feasibility studies and business case development

**Community of Practice forums** at least twice a year with guest speakers to showcase projects and enable networking. These events will invite stakeholders from other sectors and regions to build support for community energy.

**Activity 2:** Delivery of community energy Implementation Ready Projects

10 projects were submitted from Gippsland. 16 were approved across Victoria, 8 were from Gippsland.

Approved Gippsland projects were:

Venus Bay	9.9kw solar + 26.4 battery
Neerim South Hospital	39.6kw solar
Coronet Bay Community Hall	11.2kw solar
Heyfield Wetlands	13.32kw solar
Heyfield Historical	6.66kw solar
Lucknow football	20kw solar 3 Tesla power walls
Sandy Point Community Centre	5kw battery added to existing 10kw solar
Mallacoota Waste Water Treatment Plant	39.6kw solar

We hope to have our project at the Venus Bay Community Centre completed as soon as possible – watch out on our Social Media pages for updates and photos as we the project takes shape.

Other useful sites:

<https://www.communitysolar.org.au/>

<https://c4ce.net.au/>

<https://gccn.org.au/about/>

<https://eico-op.org.au/>

# Cape to Cape Resilience Project – consultation now open

## SHARE YOUR COASTAL STORY

### Building coastal resilience from Cape Paterson to Cape Liptrap — Department of Environment, Land, Water and Planning

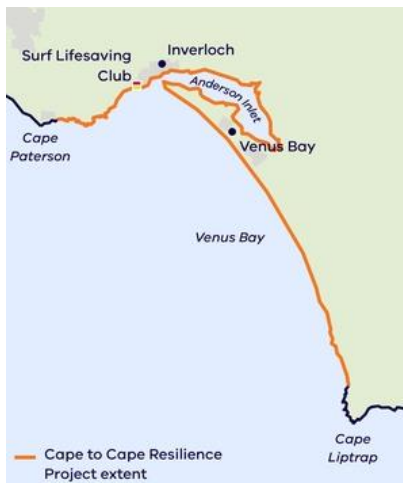
The coastline around Inverloch, Venus Bay and Anderson Inlet is a beautiful and dynamic part of the landscape. Natural processes such as winds, waves, tides, currents and catchment flows move sand and sediments, reshaping the coastline. These processes sometimes impact on places we value, and the way we use the coast.

The coastline at and around Inverloch has experienced significant erosion in recent years. Public assets, values and infrastructure are now at risk of damage and loss.

To proactively plan for managing future changes to the coastline, we're delivering the Cape to Cape Resilience Project. This project will combine the latest science, technical assessments and community aspirations to develop a long-term plan to manage important places, assets and other values in the future.

<https://www.marineandcoasts.vic.gov.au/coastal-programs/cape-to-cape-resilience-project>

### Cape Paterson to Cape Liptrap - the study area



The study area for the Cape to Cape Resilience Project is between Cape Paterson and Cape Liptrap. The area of interest includes:

- The open coast from Cape Paterson along the coastal cliffs adjacent towards Inverloch
- The open foreshore and surf beach at Inverloch
- The dynamic estuaries and tidal mudflats of Anderson Inlet
- The open coast and dunes of Venus Bay south to Cape Liptrap
- Inland from the coastline, allowing for assessment of estuary and groundwater impacts.

### A strategic approach to adaptation

Once we better understand our hazards and potential at-risk areas along our coastline, we can identify different ways to manage these locations through adaptation. Adaptation can be defined as 'the process of adjustment to actual or expected climate and its effects'.

Management actions that will help us adapt to current and future coastal hazards will be informed by community views and preferences. We will initially focus on developing management options for the Inverloch foreshore because that is where the significant impacts of erosion on coastal land have been occurring. Feasibility studies will be undertaken for key management options.





Members of the public who live in or visit Inverloch, Venus Bay, Andersons Inlet and nearby communities can share their local coastal stories and feedback via a range of activities, including an online survey and interactive map. Feedback from these activities will help inform a community values study and coastal risk and vulnerability assessment.

Find out more and help decide the future management of our iconic coasts at [Engage Victoria](#).

Consultation is open until **Sunday 22 August**.



## How do I participate?

Speaking with our community is key to the Cape to Cape Resilience Project. Our stakeholder and community engagement is happening throughout the project and will be tailored to align with and inform key elements of the technical work.

We are currently seeking feedback to help inform our values study and risk and vulnerability assessment. It is the first of several surveys that we will be undertaking to help shape the Cape to Cape Resilience Project.

Please complete our [mapping exercise](#) and our [5-minute survey](#) to provide us with your perspectives on:

- How you use the beaches, foreshore areas, estuaries, bays, inlets and coastal creeks in the Cape to Cape study area
- What you value about our coastal zone
- Your experiences of coastal hazards (erosion, inundation)
- Your memories and knowledge of how the coast has changed over time

## Next steps

Your feedback will help inform our values study and risk and vulnerability assessment, which will be developed over the coming months, and help to shape our approach to adaptation and coast resilience. Face-to-face community engagement is challenging in the current health situation. DELWP have been adapting activities to ensure the public can still have conversations while following all guidelines to make sure everybody is safe.



# The Great Pippi Research Study – finally released.

In December 2016, Dr John Morrongiello, from the University of Melbourne and his team started the much anticipated sustainability project: **Assessing the sustainability of Venus Bay's recreational and commercial pipi harvest**



This was a 3 year study of the Venus Bay pipi population and was funded by Recreational Fishing Licence Grants Program.

The study sampled a number of locations along 15km of the beach, from the top of Point Smythe to 8km south of Beach 1. At each location, they sampled the pipi population and measured the size of all individuals we catch. They also measured the beach profile using surveying equipment to quantify local habitat variation. Using this data, in conjunction with tide, season and geographic information to model the drivers of pipi abundance on the beach. This information allows assessment of the relative importance of recreational and commercial harvesting and natural environmental variability on driving demographic patterns in the population.



While this study was complete nearly 2 years ago – it has taken some time going through official channels, but now it is available.

While issues relating to the sustainability of pipi harvesting are still ongoing, this study provides accurate data to inform future policy positions and provides a platform of scientific research for future advocacy

Copies of the report can be found on our website: [www.vbcc.org.au/community](http://www.vbcc.org.au/community)

Venus Bay supports a diverse and vibrant recreational pipi fishery that is highly valued by the Victorian community. Papis in the region have also been an important food source to traditional owners for many thousands of years (Godfrey 1989; Frankel 2017). The recreational and commercial harvest of individuals in any fishery necessarily has an impact on population biomass. However, fisheries can be successfully managed when information is available on the relative impact of harvest and environmental variation on population dynamics. This study is the fourth scientific investigation into the status of Venus Bay's pipi population and follows work by Early *et al* (2013), Lewis *et al* (2013) and Parry (2014).

Venus Bay extends for approximately 24 kilometres from Point Smythe in the northwest to Arch Rock in the southeast. Harvester access is mostly confined to the northern part of the beach meaning that large areas receive limited fishing effort. Our results over the period 2015-2018 provide evidence that harvesting, especially in the peak summer period, locally reduces juvenile and adult pipi abundance within 3km of each of the five beach access points. This pattern is similar to that observed in many other recreational fisheries where harvest has localised impact at sites of fishing activity. The pipi harvest signal persisted even after we accounted for local and bay-wide environmental conditions.

Despite evidence of reduced abundances near beach access sites, fishing pressure across 2015-2018 only had impact on summer and autumn biomass. Adult biomass recovered in winter and spring, likely driven by the continual growth and recruitment of juveniles into larger size classes. Indeed, the observed reduced abundance of papis does not appear to impact on local recruitment given that newly settled papis were common along the beach at all times of the year. The southeast region of Venus Bay supports a large, and relatively unfished pipi population that could be playing a significant role in the production of local pipi recruits. This region appeared unaffected by recreational harvest. Further research is needed to understand the importance of small spatial and temporal scale recruitment on sustaining pipi populations.



## Assessing the sustainability of Venus Bay's pipi fishery

### Recreational Fishing Grants Program Research Report

Dr John Morrongiello

School of BioSciences | National Centre for Coasts and Climate  
University of Melbourne





# Zine making, exhibition and competition.

Rural neighbourhood houses and community centres have been invited to participate in a creative art project called 'The Exhibition of Ideas'.

This art project is designed to encourage members of rural communities to create little magazine (zines) exploring the benefits of living in the country and the opportunities for improvement.

You will have the opportunity to also submit your Zine into the \*competition and exhibition in Bendigo where there will be a range of people's choice awards of up to \$250 based on the following categories:

Artistic merit, Insightful thoughts, Beautiful words & Overall incredible

The Theme is: **'How does living in <INSERT YOUR TOWN HERE> make you happy and healthy and what would make it better?'**

Creating zines is a fun way to start thinking about the assets and opportunities in a community in a way that is appealing to all ages, diversities and skill levels. You don't need to have amazing art skills, you can just use pictures cut from magazines. The project is aiming to produce a visual feast of ideas that hopefully spark enthusiasm and ideas.

*We are encouraging locals to:*

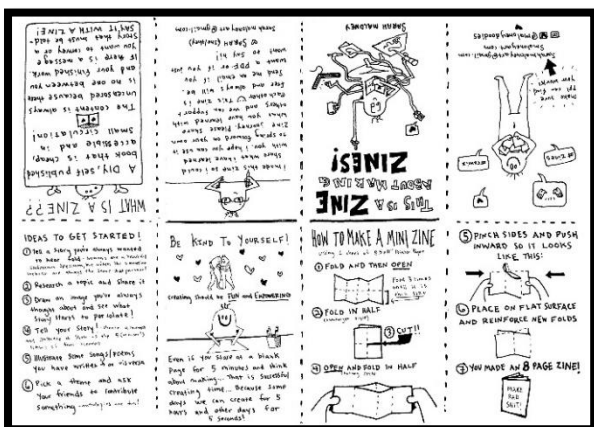
- \*Create a zine celebrating their own local place, perhaps you could encourage a 'group' or 'family' entry

*Venus Bay Community Centre will:*

- \*Provide templates if you need one
- \*Facilitate TWO Zine creating workshops on the 12<sup>th</sup> and 19<sup>th</sup> of August
- \*Photocopy and scan your Zine so it can be printed or sent as a PDF to the "Exhibition of Ideas" organisers in Bendigo.
- \*Hold a local exhibition of Zines (if there is enough interest)

To get the creative juices flowing the event organisers have provided a few things for you available on our webpage.

- Exhibition entry details which includes submission links, rules and how to get the details for the exhibition. (this also includes some links for great resources on zine making)
- A lovely printable zine from Melanie Thoren about their zine exhibition (print it double sided and staple it in the middle).
- A fantastic little printable zine from Sarah Maloney about how to make a simple 1- page zine. (see image below)



Check these examples out and scroll down for the download links

If you are still a little confused, below we have included some brilliant Zine resources

<https://thecreativeindependent.com/guides/how-to-make-a-zine/>

<https://www.instructables.com/Guide-To-Zine-Making/>

<http://www.stephmedford.com/blog/making-zines>

<https://www.smaloneyart.com/about>

<https://www.slv.vic.gov.au/self-made>

<https://www.stickyinstitute.com/>

For competition entry details [click here.](#)

*\*You are welcome to enter the competition without attending a workshop at the Community Centre*

This creative project is a La Trobe University Rural Health initiative.



### PLAYGROUP NEWS:

The Venus Bay playgroup has been steadily growing in numbers and we've found families coming from other neighbouring towns which is absolutely amazing! We are quite a multicultural playgroup, so in the coming weeks we plan to delve more into learning about different countries and their ethnic foods, clothes and celebrations. We welcome all new families who are interested in playgroup or contributing however you feel would be helpful. Look forward to seeing you all at the next playgroup.

### BUSHLINK TOY LIBRARY

We have been really enjoying the wonderful service of Bush Link Toy library. It's a fantastic and environment friendly way to integrate second hand toys into your child's play and creativity time, without the expense of having to buy new toys. Blake, who runs the Toy library in the Gippsland/Bass coast area is very friendly, supportive and open to helping the parents and children who have trouble accessing the service and more toys upon request. Feel free to come down and borrow some toys. Bush Link Toy Library comes on Thursday mornings (during playgroup). It's \$2 per toy and you get to keep them for a fortnight. You're always welcome to extend if the little ones can't get enough of them 😊 Please tell a friend who you feel would benefit from this awesome service :)



## TOY LIBRARY

Did you know the Bush Link toy library visits Venus Bay Playgroup every second Thursday during school terms between 12:10pm and 1:00pm. Anyone is welcome to join the Toy Library and borrow items. We have a huge range of toys, books, play equipment, DVDs and parent resources available for loan. For more information please come along and have a look or contact Blake at [blake.dunstan@vt.uniting.org](mailto:blake.dunstan@vt.uniting.org)



*Lunch*  
*Every Wednesday*  
**12PM UNTIL 1PM**

*All welcome come join us and enjoy a catch up with others.*



# \$250 power saving bonus



## AVAILABLE NOW

Do you have a concession card or receive any payments from Centrelink or DVA? We can help you register for the Power Saving Bonus of \$250 - just bring in your concession card, your electricity bill and bank details.

### VENUS BAY COMMUNITY CENTRE

27 CANTERBURY RD,  
VENUS BAY

The hot pink BreastScreen Victoria van is returning to Foster from 23 August – 24 September 2021 to provide free breast screens for women over 50. A breast screen every two years is the best way to find cancer early, when treatment is most successful. Breast screens are with a female radiographer, take 10 minutes and you don't need a GP referral or Medicare card. Don't miss out! And tell the women in your life over 50 to book too. The van will be at South Gippsland Hospital – 87 Station Road, Foster. Book online or call 13 20 50.

Links:

Bookings: <https://bookings.breastscreen.org.au> or call 13 20 50

Facebook: Foster van event page; BreastScreen Victoria

Website: [www.breastscreen.org.au](http://www.breastscreen.org.au)



#### **BASS COAST FAMILY DAY CARE PROFESSIONAL HOME BASED CHILD CARE EDUCATOR VACANCIES**

We are currently seeking applications from suitably qualified and experienced child care workers to join our team of family day care educators. There are a limited number of vacancies to be filled in specific areas of Bass Coast and South Gippsland Shires.

- ☐ If you have a commitment to and enjoy caring for young children,
- ☐ If you believe children have a right to high quality child care,
- ☐ If you would like to earn a good income from your own home,
- ☐ If you are able to work independently, while being supported by the Family Day Care team,
- ☐ If you can communicate well with children and adults,

Family Day Care may be the profession you are looking for!

For more information, contact Trish on: 56713301 or 0418517522  
Email: [familydaycare@basscoasthealth.org.au](mailto:familydaycare@basscoasthealth.org.au)

#### **Bass Coast Family Day Care is expanding into South Gippsland.**

We are actively seeking Qualified Educators in smaller rural towns to allow families to access childcare in their local area.



## BreastScreen Victoria



A breast screen every two years is the best way to find cancer early, when treatment is most successful. The van will be at South Gippsland Hospital – 87 Station Road, Foster. Book online or call 13 20 50.





**AGM**  
Monday 9<sup>th</sup>  
August 2021  
2:30pm followed by  
afternoon tea and  
refreshments

Tarwin Lower & District Community Health Centre  
30<sup>th</sup> ANNUAL GENERAL MEETING at 19 Walkerville Road, Tarwin Lower  
Due to retirements President, Vic President and Secretary need to be filled.  
Volunteers Co-ordinator position also available

Contact Ray Saunders 0419 894 980 or Wendy Don 0409 811 157 for further information

---

## **IT'S COMING BACK.**

### **Tarwin District Men's Shed & Auto & Machinery Club Inc. Presents.**



**Sunday 31<sup>st</sup> October 2021 - 9.30am – 3.30pm.**  
**TARWIN LOWER RECREATIONAL RESERVE**  
**WALKERVILLE RD, TARWIN LOWER**

Cars, Motorcycles, Tractors & Trucks.  
Tractor Pull, Stationary Engines, Running Army Tank.  
Plenty of Children's Free Activities.  
Food & Market Stalls.  
Emergency Services Displays.

**A FUN DAY FOR ALL AGES.**

**IT'S A MUST**

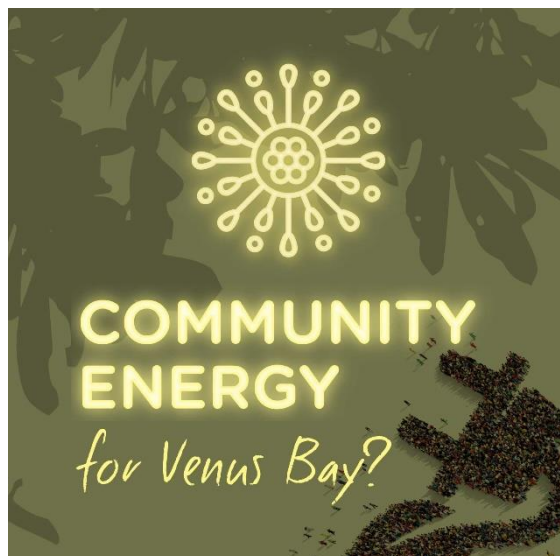
**PUT IT IN YOUR DIARY NOW.**



The tour by the SHUFFLE CLUB  
has unfortunately been  
**CANCELLED** due to covid  
restrictions.



# Community Energy News



We are very excited to announce we've been successful in our funding for our Community Energy Resilience Project at the Venus Bay Community Centre.

Recently, Minister Lily D'Ambrosio announced funding from [Sustainability Victoria](#) for a range of Community Energy Hubs and implementation projects across the State – and we are thrilled to be part of the Gippsland project with our resilience project.

As part of the Community Energy for Venus Bay initiative we've been working on, the Centre will improve our energy efficiency by installing additional solar panels along with a substantial lithium battery. This means we can not only model and achieve our own energy efficiency but be able to provide

information and support for our community members when the grid goes out.

The [Gippsland Climate Change Network](#), along with [Energy Innovation Co-op](#) and Mallacoota Sustainable Energy Group will establish a GIPPSLAND COMMUNITY POWER HUB – see information below.

Furthermore – there are new grants available for community groups from Sustainability Victoria (closing 20 August):

## Community Climate Change and Energy Action Program

The Community Climate Change and Energy Action Program supports Victorian community groups by funding upgrades to community facilities.

These upgrades aim to reduce energy costs and greenhouse gas emissions through a range of supported measures including energy-efficient and renewable energy technology.

There are two streams of funding available:

**Stream 1 Audit grants:** will support audits on existing facilities to identify comprehensive energy improvement upgrades.

**Stream 2 Implementation grants:** will support the implementation of projects. Two grant Tiers are offered in Stream 2 based on the anticipated level of reduction in energy costs and greenhouse gas emissions:

Tier 1: Project grants will award grants for the implementation of energy improvements.

Tier 2: Innovation and Best Practice grants will be available for projects targeting net zero carbon emissions.

More info: <https://www.sustainability.vic.gov.au/grants-funding-and-investment/grants-and-funding/community-climate-change-and-energy-action-program>



# Tarwin Lower Film Society News

The Tarwin Lower Film Society was due to kick off its 2021-2022 season on Friday 16<sup>th</sup> July with the film "The Proposition". Unfortunately, it had to be cancelled because of a Covid lockdown.

The second film is scheduled for Friday 20<sup>th</sup> August and is an Italian comedy "God Willing".

We will try and reschedule "The Proposition" for later in the year. Films are screened at the Tarwin Lower Mechanics Institute Hall.

A list of films for the season is listed below. A synopsis of the movie "God Willing" is also below.

Now is the perfect time for you to purchase a membership.

Memberships are available at [Trybooking.com](https://www.trybooking.com) (just search for Tarwin Lower Film Society).

12 months - \$60

3 months (consecutive) - \$25.

Alternatively, you can find a TryBooking link at the [tarwinlowerhall.com](https://tarwinlowerhall.com) website.

For convenience, a link to Trybooking website can also be found below:

<https://www.trybooking.com/book/sessions?eid=751008>

We look forward to seeing you in August.

1. 16 July 2021 – The Proposition (2005 Australian film)
2. 20 August 2021 - God Willing (2015 Italian comedy) - subtitles
3. 17 September 2021 - The Kite Runner (2007 American film)
4. 15 October 2021 - The Isle of Dogs (2018 American animated film)
5. 19 November 2021 - The Peanut Butter Falcon (2019 American film)
6. 21 January 2022 - Boy (2010 New Zealand film)
7. 18 February 2022 - First Reformed (2017 American film)
8. 18 March 2022 - Mrs Carey's Concert (Australian documentary)
9. 15 April 2022 - A Fantastic Woman (2017 Spanish Film) – subtitles
10. 20 May 2022 - I, Daniel Blake (2016 British film)
11. 17 June 2022 - The Hunter (2011 Australian film)

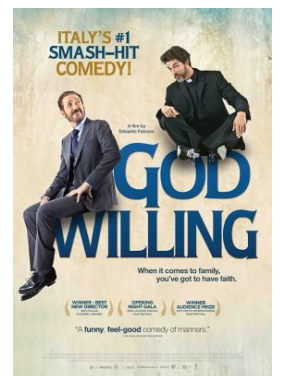
Any queries can be sent to [tarwinlowerfilmsociety@gmail.com](mailto:tarwinlowerfilmsociety@gmail.com)

## **GOD WILLING – 2015 Italian Comedy – Rated PG - SCREENING Friday 20<sup>th</sup> August**

**Synopsis:** When the son (Marco Giallini) of an arrogant cardiac surgeon (Laura Morante) announces an intention to become a priest, his atheist father goes under cover to discredit a charismatic priest (Ilaria Spada).

### **Critic reviews:**

- What a delightful and engaging comedy, which moves along at pace and is entertaining throughout.
- It's a warm, enjoyable, funny and sometimes wise exploration of family, friendship, faith, fallibility and fatherhood in a double sense of the word.
- God Willing is a comedy of manners with some fine acting by veterans of Italian cinema.
- The story flows coherently, with great rhythm and lots of humour, it even has some surprisingly poetic moments.





# Tarwin Lower Union Church

*News*



## Regular services:

Saturday 5:30 p.m. Catholic  
and Mass 6.30 p.m. (every Saturday after 2<sup>nd</sup>  
Sunday of the month)

Sunday 10.30 a.m. Anglican/Uniting

*Our mission is to be a welcoming, sharing Christian community*

## General church notices:

Weekly Recitation of the Rosary, followed by a cuppa and chat,  
at 6 Mercury Drive, Venus Bay

Wednesday at 2 pm

Anyone interested phone Trish on 0490286884

Thank you to those who are encouraging the painter  
as he works towards refreshing the exterior of the church

## Attention!! Attention!!

Following our first successful study we offer a new topic "The gift"  
as advertised below

## CALLING WOMEN

## OF ALL AGES and STAGES

**"Let's get together" to grow, learn and change  
CHOICES**

Learning to live every moment as a gift

It's not what happens to us most,  
it's what we choose to do with it.

We look at the vulnerability and  
common challenges we all face.

Commencing: Thursday 9<sup>th</sup> September

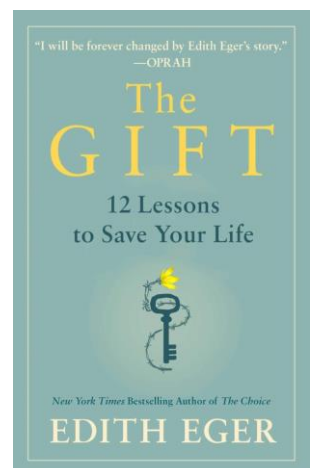
Fortnightly for 8 weeks

Tarwin Lower Church tea room

At 10.30 a.m.

Register your interest **OR** Questions?

**Paula - 0405 210 875 (Trained Counsellor and Family Therapist)**



# SGLN to get a second Landcare facilitator



Congratulations to South Gippsland Landcare Network who have received funding that we will allow them to employ two facilitators to support their groups over 2021-24.

They will be advertising soon, but if you or someone you know is keen to join a dynamic, environmentally focussed team and has the skills to help our landcare groups achieve on-ground action, please get in touch with them!



## Controlling blackberry & other weeds

Ideal for new & novice landholders

SGLN and the Victorian Blackberry Taskforce invite you to a free workshop to:

- **demonstrate** mechanical, chemical and organic methods for blackberry control
- **discuss** what other weeds need to be controlled in South Gippsland, and why.

### What to expect?

- presentations by Victorian Blackberry Taskforce, Agriculture Victoria, Lyrebird Count and the South Gippsland Shire Council
- information on controlling other weeds of concern
- demonstration of drone technology for blackberry control
- free morning tea and lunch.

### What to bring?

- lots of questions
- wet weather gear, sturdy shoes
- examples of weeds you would like identified (properly bagged to avoid risk of spreading).

### When

Sunday, 15 August 2021  
9.45am - 12.30pm

### Where

Koonwarra Recreation Reserve  
Old Koonwarra-Meenyan Road and Buckingham  
and Fowler Roads, Koonwarra

### Register by Thursday, 12 August 2021

<https://www.eventbrite.com.au/e/weed-control-in-south-gippsland-your-backyard-our-backyard-tickets-163459256035>

### COVID restrictions apply

### More information

[info@sgln.net.au](mailto:info@sgln.net.au)

This workshop is part of the Weed Control In South Gippsland: Your Backyard, Our Backyard Project. It is funded by the South Gippsland Shire Council's 2021-22 Community Grant Program and the Victorian Blackberry Taskforce, and supported by Agriculture Victoria and the West Gippsland Catchment Management Authority.



VICTORIAN BLACKBERRY TASKFORCE

South Gippsland Landcare Network  
Incorporation No. A0051992A

We acknowledge the Traditional Owners of the land on which we work and meet.





# RIVER POLES

Our River Poles project is nearing completion. You may have noticed the grey poles being erected along the bicycle path between Tarwin Lower and Venus Bay over the last couple of weeks. Many thanks to the Bush Reserves team at the Shire for putting these in for us.

The poles will have graphic environmental/interpretive signage displayed on them featuring information about what you see when you traverse the iconic path. The themes

- About the River,
- Along the River,
- In the River
- About the River

will be installed on 20 posts in strategic locations along the pathway. This project seeks to protect, enhance, and preserve the natural environment we all value, and along with our Water Tank mural and graphic signage is part of a larger initiative to provide local information about the environment we share.

Signs should be in place in the next month – with amazing graphics by Red Mullet Creative, and information and support from West Gippsland Catchment Authority, Lorraine Norden, Landcare, Birdlife Australia, Inverloch Historical Society and with many thanks to South Gippsland Shire Council community grants program for funding and support for the project.



**REDMULLETT** creative INTERPRETIVE SIGNAGE / VBCC

*Artists Impression – Red Mullet Creative*





## Volunteering:

We value our volunteers and if you have a little time to spare and have some of the skills we are currently looking for we would love to hear from you. We may also be able to help you fill your Centrelink volunteering requirements.



## Volunteers wanted

We like new volunteers anytime but we are currently looking for people who can assist in the Recycling Centre on Thursdays and Saturdays.



Making/do.

## My Basket

the workshop to create your unique basket.

On my recent desert travels I was invited to 'weave and yarn' by an indigenous basket-maker.

Come and sit together and weave for an afternoon, with the technique used by Tanami artists to create a basket that is uniquely yours.

Basic materials are supplied, and you are asked to bring fabrics, wools, threads and yarns from your life to weave in.



Saturday 31st July  
1-5pm

\$65

<https://www.trybooking.com/BTDGM>

BTDGM

Amanda -0416396551



94 Outlook Drive  
Venus Bay



# UPCYCLING INSPIRATION – Recycle, Reuse



The aim of our Community Recycling Enterprise is to provide an alternative to taking goods out of our community, or even worse, throwing them out.

We recycle & redistribute preloved clothing, books, some furniture and lots of bits and pieces.

All proceeds from the op-shop go towards the other programs the Centre is able to offer.

At times we are inundate with great items that are just out of date or not the 'current' fashion.

We have decided to offer a little inspiration.

We would love to see what others in the community are doing to save items from landfill.

Post to our facebook page and while you are there like and follow to help spread the word.

We currently have a collection of Retro tea towels in good condition available.

Figure 1 \*Pictures from Pinterest

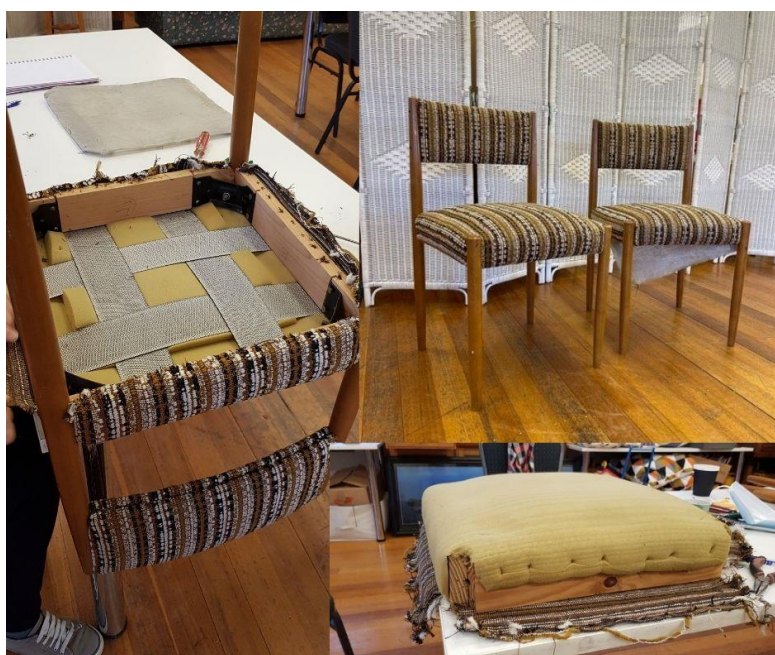
## Collective Revamp

Another way to rehome furniture items that come into the Centre.

Every Wednesday we are working together to reupholster and renew old pieces. Documenting the process along the way.

You are welcome to join us and share your skills or learn some new skills.

1.00 – 2.00 every Wednesday





*"Small School, Big Opportunities"*  
Kindness, Cooperation, Resilience, Respect

**Tarwin Lower Primary School**  
School Road  
Tarwin Lower 3956  
Ph. 5663 5263  
Fax. 5663 5474  
tarwin.lower.ps@education.vic.gov.au

## **TARWIN LOWER PRIMARY SCHOOL TRANSITION DATES FOR PREPS BEGINNING IN 2022**



<b>1.</b>	Friday 12 <sup>th</sup> November 2021	11.30am – 1.30pm
<b>2.</b>	Friday 19 <sup>th</sup> November 2021	11.30am – 1.30pm
<b>3.</b>	Friday 26 <sup>th</sup> November 2021	11.30am – 1.30pm
<b>4.</b>	Friday 3 <sup>rd</sup> December 2021	11.30am – 1.30pm
<b>5.</b>	Tuesday 7 <sup>th</sup> December 2021	09.00am – 11.00am



School tours are very welcome (if  
restrictions permit).  
Please call 5663 5263.





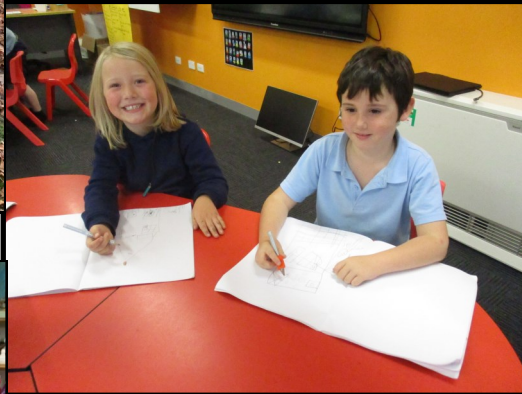
# What's been happening at Tarwin Lower Primary School...



At the end of last term we held our annual 'After School Fun' evening. All students stayed after school for games, fun and dinner. Students in Grades 2 - 6 slept at school overnight. It was fantastic.

Our students love collecting and playing in the autumn leaves.

Students hard at work in the classrooms and getting creative in the art room.





# STORM AND FLOOD RECOVERY SUPPORT HOTLINE



# 1800 560 760

- ✓ Register for Clean-Up on private property
- ✓ Access your own Recovery Support Worker
- ✓ Mental health and wellbeing support
- ✓ Financial counselling support
- ✓ Information on available payments

**8am–7pm Monday to Friday**  
(excluding public holidays)  
**9am to 1pm on weekends**



# Are you burning-off safely?



For many people, burning-off vegetation is an effective way to prepare and maintain properties. Unfortunately each year CFA crews are called out to help people who lost control of their burn-off.

Here is some simple advice to stay safe when burning-off.

## FIRE DANGER PERIOD

You can only burn-off if you have a written permit issued by the Municipal Fire Prevention Officer or the CFA District Office.

## TOTAL FIRE BAN DAYS

All fires in the open air are banned during Total Fire Ban days.

Any permits are suspended for the duration of any Total Fire Ban days.



Have you checked your council's local law regarding when and where you can burn off?

You need to check your council's website for local laws to ensure you're allowed to burn off. Your council may have regulations and certain days that you can burn.

If CFA has declared the Fire Danger Period for your municipality, open air burning is prohibited unless a specific permit is obtained. Fines for burning off during this time without a permit can be up to 120 penalty units and/or up to 12 months' jail.

Have you checked the weather?

Check weather forecasts for the day of your burn-off and a few days afterwards. If more than light winds you should postpone your burn-off.

Also check it won't be too windy on following days, as the wind can reignite your burn.

Do you have an adequate water supply?

You need to have enough water to extinguish a possible outbreak. For small fires, it's recommended you either have access to a hose or at least 10 litres of water. For larger fires appropriate firefighting equipment and/or machinery may be required.

Clean up around your burn site.

Create a 3-metre clearance of all flammable material around your whole burn-off site.

Have you registered your burn-off?

Register your burn-off by calling **1800 668 511**. This will ensure CFA won't be called out unnecessarily to your burn-off.

Have you notified your neighbours?

Ensure you are considerate of your neighbours when burning off. Notify them if you are in close proximity and the smoke may affect them. Also burning items that are wet or green may cause excessive smoke.

Have you put it out properly?

Make sure there are enough people to monitor, contain and extinguish your burn-off safely and effectively. Ensure that your burn-off is completely extinguished before you leave it.



## Do you have a few hours to spare?

We are always looking for volunteers to help out at the community centre...do you have any particular skills you can contribute? Or perhaps you have a bit of time to spend helping with filing in the office or sorting donations for the Recycling enterprise?

Every bit counts and every bit is appreciated. We could not function without our fabulous team of volunteers.

So why not come and join in!

Situated at 27 Canterbury Road, Venus Bay.

Phone: 56637499, Send mail to Post Office Box 786, Venus Bay 3956

Email: [vbcc@bigpond.com](mailto:vbcc@bigpond.com) Website: [www.vbcc.org.au](http://www.vbcc.org.au)

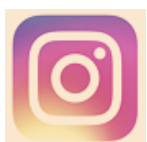
Opening hours reflect the season - please check our website or Facebook for details

or call Alyson 0416 242 331

Venus Bay Community Centre is supported by:  
Department of Health & Human Services (Victoria) and the Commonwealth Government, South Gippsland Shire Council.

Our website is [www.vbcc.org.au](http://www.vbcc.org.au)

Find current and back issues of Matter Of Fact on our website. Please contact us if you wish to be on our email distribution list.



**VENUS BAY**  
COMMUNITY CENTRE